



EASTERN MICHIGAN UNIVERSITY

**SOAR
HIGHER.**



Welcome to the Graduate School at Eastern Michigan University.

Eastern Michigan is a comprehensive university that offers over 180 doctoral, master's, specialist's, and graduate certificate programs in five academic colleges. Our programs range from the professional and practical to the purely academic. With such a diverse range of programs, we are confident you can find your fit.

Recognized as a Doctoral University with High Research Activity (R2), Eastern prides itself on being a large campus with a small campus feel. Our course offerings are extensive and varied, yet our programs offer you a sense of community and connection. Our diverse student body promises a welcoming experience for everyone and encourages learning from students and faculty alike.

The graduate programs at Eastern have accomplished, nationally recognized faculty who will mentor you and guide you through your personal program of study and will help you develop, design, and implement your capstone, thesis, or dissertation project. Faculty who have external funding from grants and contracts welcome graduate students to join their research teams in discovering solutions to important problems.

Graduate-level research and creative activity reaches across a variety of scholarly endeavors, from artistic expression or the scholarship of teaching and learning to community engagement and traditional research. Graduate student scholarship is celebrated annually at the Graduate Research Conference. Students showcase their original work through oral presentations, posters, and an arts-based platform called Arts Front.

Graduate Assistantships and Doctoral Fellowships provide avenues for funding. These positions are available within academic programs and across campus departments. Serving as a Graduate Assistant or Doctoral Fellow offers additional benefits, too, including extended library privileges, priority registration, a stipend, and a tuition waiver. Other scholarships are available through the Graduate School and academic departments.

At Eastern Michigan University, you will find expert faculty, supportive staff, and a sense of community. Whether you want to advance your current career, start down a new path, research problems, discover solutions, or pursue personal development goals, a graduate program at Eastern can help you get where you want to go. What are you waiting for?

Soar Higher.

Steve Pernecky

Steve Pernecky, Ph.D.,
Associate Provost and Associate Vice
President for Graduate Studies and Research (I)




COLLEGE OF Art & Sciences

emich.edu/cas

75+ PROGRAMS

BECOME A CREATIVE, CRITICAL THINKER.

The College of Arts & Sciences (CAS), EMU's largest college, offers dynamic academic programs in the Arts, Humanities, Social Sciences, and Natural Sciences. In CAS, you will develop the knowledge and skills necessary for professional advancement in a rapidly changing world. You will work closely with an award-winning faculty that is dedicated to student success through advanced graduate studies. CAS provides opportunities to engage in artistic and research activities that foster critical thinking, human creativity, civic and community partnerships, global awareness, and passion for lifelong learning.



GAMEABOVE COLLEGE OF Engineering & Technology

emich.edu/cet

15+ PROGRAMS

PUT YOUR HANDS ON YOUR FUTURE.

The GameAbove College of Engineering and Technology (GACET) at EMU cultivates intellectual and personal growth, offering research-informed education, a welcoming, collaborative environment, and a myriad of programs focused on the practical application of scientific knowledge. Our faculty will give you the tools for lifelong learning and problem solving and a mindset to improve organizations, communities, and societies—locally and globally. From Cybersecurity to Engineering Management, we have an array of in-demand professional pathways and opportunities for you.





COLLEGE OF
**Health &
Human Services**

emich.edu/chhs

30+ PROGRAMS

IMPROVE THE WORLD AROUND YOU.

The College of Health and Human Services (CHHS) exists because a physically, mentally, and socially healthy population is vital for the advancement of society. This is where you belong if you aspire to improve the health and well-being of humanity and are seeking a personalized education designed to help you make a lasting difference. Learn alongside faculty who practice in their fields while teaching and advising. Explore off-campus, hands-on opportunities, giving you a competitive edge. Be part of personalized, industry-leading academic training for the professionals of tomorrow.



COLLEGE OF
Business

emich.edu/cob



20+ PROGRAMS

DRIVE CHANGE AND INNOVATION.

The College of Business (COB) offers a cutting-edge curriculum that equips today's students for tomorrow's global business environment. With programs infused with an international component that reflects the global economy, and faculty recognized for their teaching excellence and professional accomplishments in the corporate world, you'll become a standout business professional through a rigorous applied educational experience. Come and immerse yourself in a vibrant business community, discover ways to exceed corporate demands, find a mindset that breaks down boundaries, and lead a life of business success.

COLLEGE OF Education

emich.edu/coe

40+ PROGRAMS

BE PREPARED TO TEACH AND INSPIRE.

For over 170 years, our College of Education (COE) graduates have been some of the most highly sought after educational personnel in Michigan, across the country, and around the world. We prepare outstanding educators and leaders for diverse urban and global educational settings. As a future educator, you will discover a comprehensive range of programs to choose from. You will find faculty who balance teaching and research to prepare you with relevant skills and real-world awareness. The opportunity to learn both in and beyond the classroom will help you to be an effective change agent in your community.

HOW TO APPLY



1

VISIT

emich.edu/graduate/apply

2

SUBMIT THE FOLLOWING

- Completed graduate application
- Application fee
- Official transcripts from all previously attended colleges/universities (EMU alumni do not need to request official EMU transcripts)

Additional requirements, such as personal statements, standardized test scores, letters of recommendation, department applications, or teacher certifications are also determined by each academic department. We strongly encourage you to consult program information in the Graduate Catalog at emich.edu/degrees/grad or to contact the specific academic department to which you are applying.

QUESTIONS?

Graduate Admissions

graduate_admissions@emich.edu | 734.487.3060

International Admissions

international.admissions@emich.edu | 734.487.0205

ALUMNI Stories

“

BEING A GRAD STUDENT AT EMU MADE ME A BETTER LEADER AND BUSINESS PROFESSIONAL. I REALLY CONNECTED WITH A FEW PROFESSORS AND THEY HELPED ME MAKE CONNECTIONS THAT I WOULD NEVER HAVE MADE OTHERWISE. ADDITIONALLY, I FOUND A MENTOR THAT HAS HELPED ME GROW BOTH PERSONALLY AND PROFESSIONALLY.”

LORA STEVENS, MBA'17,
NONPROFIT MANAGEMENT
Technology Acceleration
Programs Specialist, U-M
College of Engineering, Center
for Entrepreneurship

“

THE EMU MBA PROGRAM IS AMAZING BECAUSE OF THE BREADTH OF KNOWLEDGE OF THE PROFESSORS. THERE ARE OPPORTUNITIES FOR NETWORKING WITH LEADING BUSINESS PROFESSIONALS AND BUILDING LONG-LASTING RELATIONSHIPS.”

KYLE WOODYARD,
MBA'16, FINANCE
Accountant, Realpage, Inc.

“THE INFORMATION ASSURANCE PROGRAM AT EMU AFTER GRADUATION EXPANDED OPPORTUNITIES AND CAREER ADVANCEMENT. THE PROGRAM RELATES TO REAL-WORLD EXPERIENCES AND PROVIDED A NETWORK OF CONNECTIONS TO EXCEL IN NEW CAREER PATHWAYS.”

KELLY FRISCH, MA'13
INFORMATION ASSURANCE



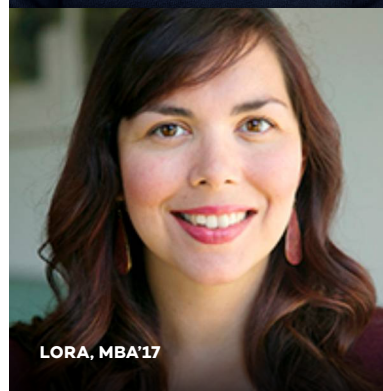
KYLE, MBA'16



ISRAA, MSN'18



STEVEN, MA'21



LORA, MBA'17

“

I'VE LEARNED SO MUCH DURING MY TIME AT EASTERN MICHIGAN UNIVERSITY. THE GRADUATE ASSISTANTSHIP HAS PROVIDED MANY OPPORTUNITIES TO EXPAND MY KNOWLEDGE, EXPERTISE, AND ABILITY TO PERSONALLY EVOLVE INTO A MUCH MORE WELL-ROUNDED INDIVIDUAL TO BE READY FOR THE WORLD'S CHALLENGES. THE COMMUNITY CONNECTIONS I'VE MADE WILL INSTILL CONFIDENCE FOR YEARS TO COME IN MY FUTURE ENDEAVORS.

STEVEN SUAREZ, MA'21
COMMUNICATION

“

THE TRAINING OF EMU'S GRADUATE NURSING PROGRAM PREPARED ME FOR EVALUATING INDIVIDUAL, CULTURAL, ECONOMIC, AND SOCIETAL FOUNDATIONS FOR FACTORS WHICH IMPEDE PATIENT CARE. THROUGH THE PROGRAM, EMU TRAINED ME ON HOW TO LAUNCH AN EXTENSIVE AND FAITHFUL CAREER OF PATIENT SERVICE AS A PRIMARY CARE NURSE PRACTITIONER, WHILE USING A NURSING-BASED MODEL THAT TREATS THE WHOLE PATIENT. I CARRY THAT RESPONSIBILITY WITH GRACE, POWER, AND SUCCESS THROUGH EMU'S WELL-ESTABLISHED REPUTATION. EMU'S VISION ALLOWED ME TO DISCOVER OVER TIME PATIENTS' VALUES, THEIR MOTIVATIONS, AND THE LIFE EXPERIENCES AND EXPECTATIONS THAT SHAPE AND DRIVE THEM WHILE CULTIVATING EFFECTIVE PATIENT ADVOCACY.

ISRAA BERRO, MSN'18
ADULT GERONTOLOGY PRIMARY
CARE NURSE PRACTITIONER

“

IN MY TIME AT EASTERN MICHIGAN UNIVERSITY, I HAVE LEARNED AND GROWN SO MUCH FROM COURSE WORK, GRADUATE ASSISTANTSHIP, AND ALL OF THE SPECIAL PEOPLE I'VE MET ALONG THE WAY. THE GRADUATE ASSISTANTSHIP HELPED GROW MY KNOWLEDGE BASE AND PRACTICE SKILLS I'LL UTILIZE IN MY FUTURE CAREER. THE CONNECTIONS I'VE MADE AT EMU, PERSONALLY AND PROFESSIONALLY, ARE INVALUABLE AND IRREPLACEABLE.”

ALLYSSA MCGUIRE
CLINICAL MENTAL HEALTH
COUNSELING



EASTERN MICHIGAN By the Numbers

**SPECIALIZED MBA IN
INTERNATIONAL BUSINESS**
ranks among nation's best in
terms of global emphasis

300+
GRADUATE
ASSISTANTSHIPS

In 2021, MSHROD
program ranked **1ST
GLOBALLY** for "Master's
Programs with Emphasis
in Human Resources"

150+
GRADUATE
PROGRAMS

#1

**LGBTQ-FRIENDLY
UNIVERSITY IN MICHIGAN**

The College of Business
has been rated among nation's
best for **16TH CONSECUTIVE
YEAR** by The Princeton Review

170K

**ALUMNI
WORLDWIDE**

#3

Online Educational
Psychology Master's
program in the country

NATIONALLY RANKED
for high level of
research activity.
(Carnegie R2 Classification)

7TH

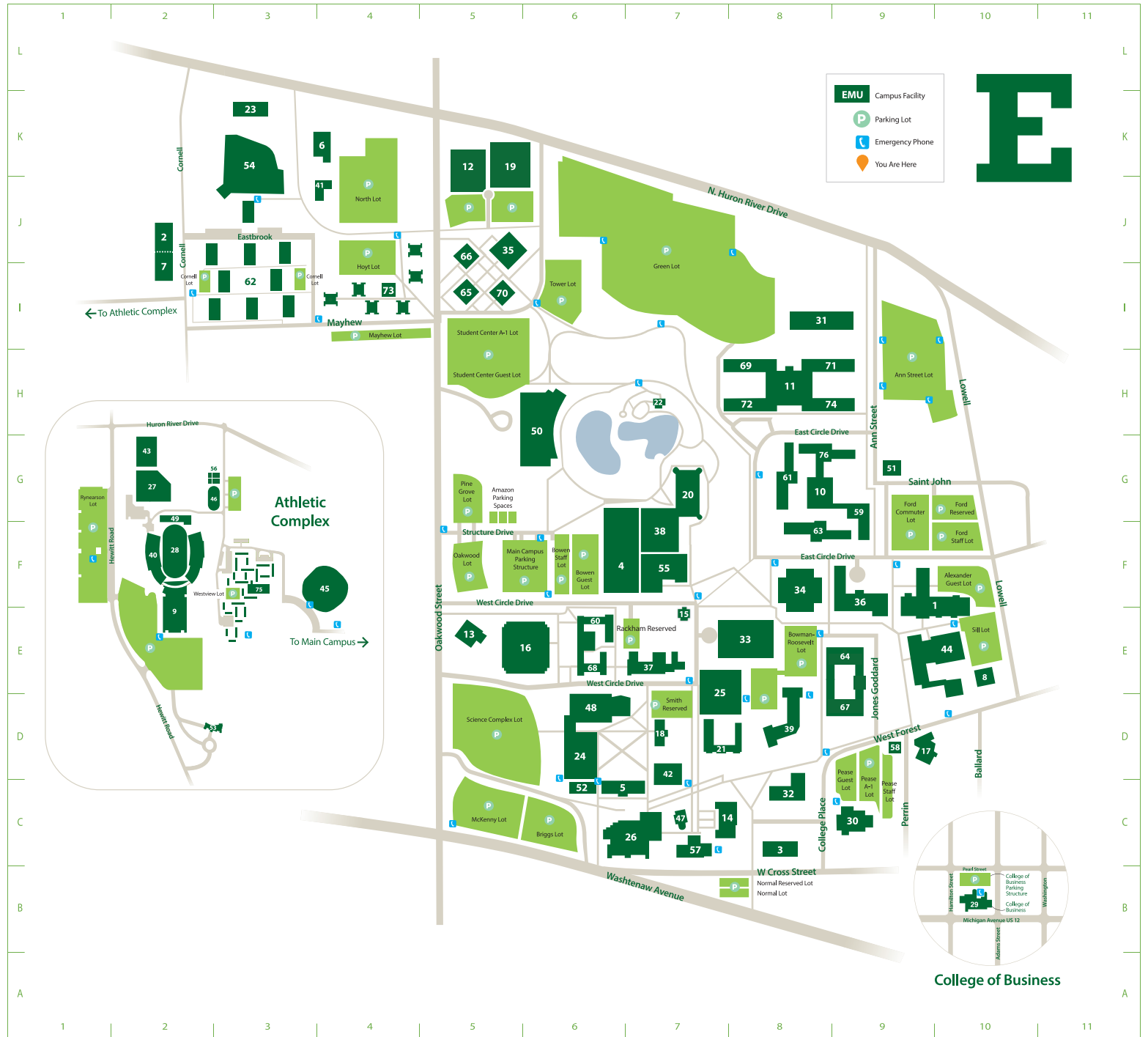
Master's in Clinical
Research Program ranked
7th in the nation for 2019

CAMPUS FACILITIES

- | | | |
|----|---|-----|
| 1 | Alexander Music Building | F9 |
| 2 | Autism Collaborative Center | J2 |
| 3 | Boone Hall | O8 |
| 4 | Bowen Field House | F6 |
| 5 | Briggs Hall | D6 |
| 6 | Central Receiving | K3 |
| 7 | Children's Institute | E12 |
| 8 | Coatings Research Institute | J10 |
| 9 | Convocation Center | F2 |
| 10 | Dining Commons | G8 |
| 11 | Eastern Eateries | H8 |
| 12 | EMU Campus Wellness Center | K5 |
| 13 | EMU Energy Center | E5 |
| 14 | Ford Hall | O8 |
| 15 | Geddes Town Hall School | E7 |
| 16 | Halle Library | E5 |
| 17 | Honors College | D10 |
| 18 | Hover Building | D7 |
| 19 | IHA Health Center @EMU | E5 |
| 20 | Jones Pool | F6 |
| 21 | King Hall | D8 |
| 22 | Lake House | H7 |
| 23 | Marching Band Practice Field | K3 |
| 24 | Mark Jefferson Science Building | D6 |
| 25 | Marshall Building | D8 |
| 26 | McKenny Hall | C7 |
| 27 | Oestrike Stadium | G2 |
| 28 | Olds/Marshall Track | F2 |
| 29 | Owen Building | B10 |
| 30 | Pease Auditorium | O8 |
| 31 | Physical Plant | I8 |
| 32 | Pierce Hall | O8 |
| 33 | Porter Building | E8 |
| 34 | Pray-Harrod | F8 |
| 35 | Public Safety | J5 |
| 36 | Judy Sturgis Hall | F9 |
| 37 | Rackham Building | E7 |
| 38 | Rec/IM Building | F6 |
| 39 | Roosevelt Hall | D8 |
| 40 | Rynaarson Stadium | F2 |
| 41 | Sculpture Studio | K3 |
| 42 | Sherzer Hall | D7 |
| 43 | SciCluna Soccer Field | G2 |
| 44 | Sill Hall | E9 |
| 45 | Softball Complex | F4 |
| 46 | St. Joe's Sports Dome | G2 |
| 47 | Starkweather Hall | C7 |
| 48 | Strong Hall | D6 |
| 49 | Student Athlete Performance Center | G2 |
| 50 | Student Center | G6 |
| 51 | Susan W. Martin EMU House | G9 |
| 52 | Terrestrial & Aquatic Ecology Research Facility | D6 |
| 53 | University House | D2 |
| 54 | Varsity Field | K3 |
| 55 | Warner Gymnasium | F6 |
| 56 | Wasik Tennis Complex | G2 |
| 57 | Welch Hall | C7 |

HOUSING

- | | | |
|----|--------------------------|----|
| 58 | 601 W. Forest | D9 |
| 59 | Best Hall | G9 |
| 60 | Brown Apartments | E6 |
| 61 | Buell Hall | G8 |
| 62 | Cornell Court Apartments | I3 |
| 63 | Downing Hall | F8 |
| 64 | Goddard Hall | E9 |
| 64 | Hill Hall | I5 |
| 66 | Hayt Hall | J5 |
| 67 | Jones Hall | E9 |
| 68 | Munson Apartments | E6 |
| 69 | Phelps Hall | H8 |
| 70 | Pittman Hall | I5 |
| 71 | Putnam Hall | H9 |
| 72 | Sellers Hall | H8 |
| 73 | The Village | I3 |
| 74 | Walton Hall | H9 |
| 75 | Westview Apartments | F3 |
| 76 | Wise Hall | G8 |



EMU BOOKSTORE

900 Oakwood
(Student Center)
734.483.2850
emich.edu/bookstore

**DISABILITY
RESOURCE
CENTER**

734.487.2470
emich.edu/drc

SERVICE EMU

emich.edu/service

**FINANCIAL
AID**

734.487.0455
emich.edu/finaid

**HOUSING
DEPARTMENT**

734.487.1300
emich.edu/residencelife

**GRADUATE
SCHOOL**

734.487.0042
emich.edu/graduate

**RECORDS
AND REGISTRATION**

734.487.4111
emich.edu/registrar

**STUDENT
BUSINESS SERVICES**

734.487.3335
emich.edu/sbs

**EAGLE ONECARD
SERVICES**

734.487.3176
emich.edu/sbs/eagleone



EASTERN

MICHIGAN UNIVERSITY